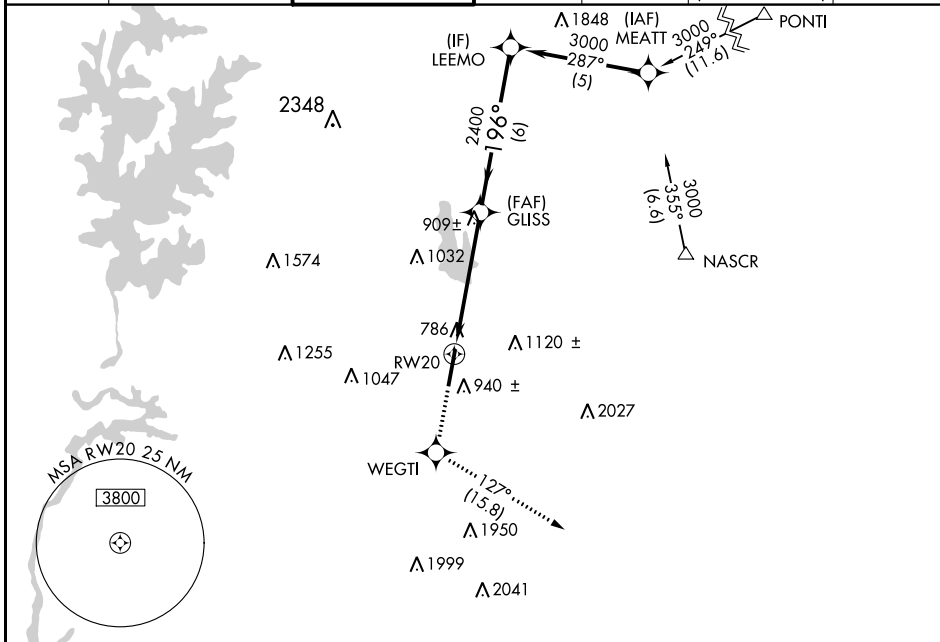


WAAS CH 56499 W20A	APP CRS 196°	Rwy Idg TDZE Apt Elev	6350 705 705
--	------------------------	-----------------------------	---

RNAV (GPS) RWY 20

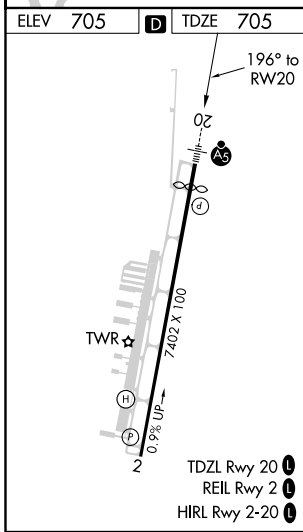
CONCORD-PADGETT RGNL (JQF)

RNP APCH.		MALSR		MISSED APPROACH: Climb to 3000 direct WEGTI and on track 127° to LOCAS and hold.		
<p>V For uncompensated Baro-VNAV systems, LNAV/VNAV NA below -16°C or above 54°C. For inop ALS, increase LNAV/VNAV visibility all Cats to 1½ SM.</p>						
ATIS ★	CHARLOTTE APP CON	CONCORD TOWER ★	GND CON	CLNC DEL	CLNC DEL	UNICOM
133.675	128.32 307.8	134.65 (CTAF)	121.85	118.55	127.25 (when twr closed)	122.95



SE-2, 03 NOV 2022 to 01 DEC 2022

SE-2, 03 NOV 2022 to 01 DEC 2022



ELEV 705	D	TDZE 705	LOCAS 093° 4 NM 273°	
3000	WEGTI	LOCAS	LEEMO	
↑	✧	tr 127°	3000	
*LNAV only.		GLISS	3000	
RW20	*1.8 NM to RW20	2400	196°	GP 3.00° TCH 44
1.8 NM		3.3 NM	6 NM	
CATEGORY	A	B	C	D
LPV DA		955-½	250 (300-½)	
LNAV/VNAV DA		1222-1¼	517 (600-1¼)	
LNAV MDA	1300-½	595 (600-½)	1300-1¼	595 (600-1¼)
CIRCLING	1300-1	595 (600-1)	1480-2¼ 775 (800-2¼)	1480-2½ 775 (800-2½)