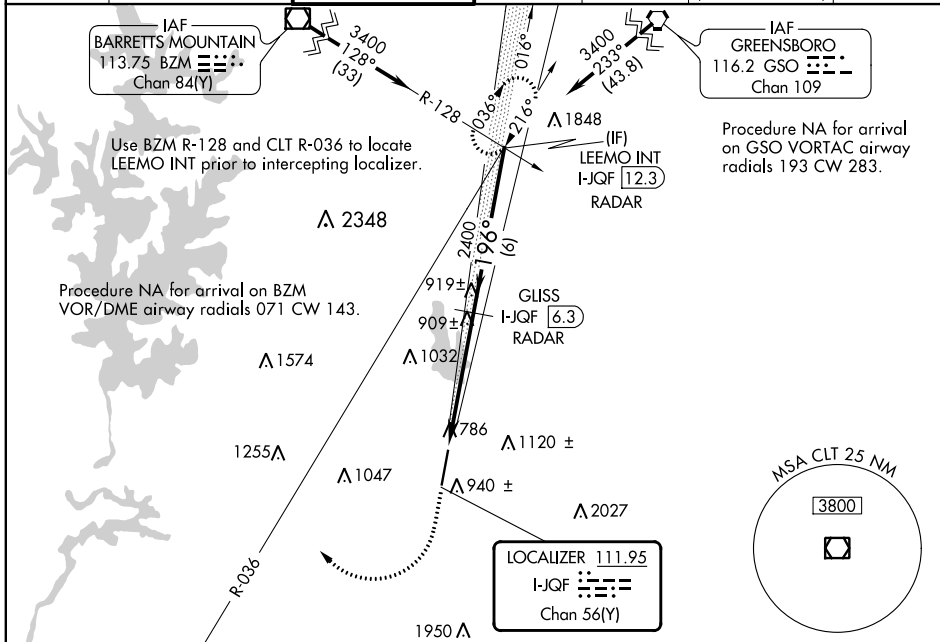


LOC/DME I-JQF <b>111.95</b> Chan <b>56(Y)</b>	APP CRS <b>196°</b>	Rwy Idg <b>6350</b> TDZE <b>705</b> Apt Elev <b>705</b>
---	------------------------	---

# ILS or LOC RWY 20

CONCORD-PADGETT RGNL (JQF)

DME or RADAR required for LOC only.		MALSR	MISSED APPROACH: Climb to 1200 then climbing right turn to 3400 on heading 020° and CLT VOR/DME R-036 to LEEMO INT/I-JQF 12.3 DME/RADAR and hold.						
⚠ For inop ALS, increase S-LOC 20 Cat D visibility to 1 3/8 SM. ⚠ NA		AS	ATIS ★ <b>133.675</b>	CHARLOTTE APP CON <b>128.32 307.8</b>	CONCORD TOWER ★ <b>134.65 (CTAF) 0</b>	GND CON <b>121.85</b>	CLNC DEL <b>118.55</b>	CLNC DEL <b>127.25</b> (when twr closed)	UNICOM <b>122.95</b>



ELEV 705	TDZE 705
1200	3400
CLT R-036	LEEMO INT
GLISS I-JQF [6.3] RADAR	LEEMO INT I-JQF [12.3] RADAR
LOCALIZER 111.95 I-JQF Chan 56(Y)	

\* LOC only.

CATEGORY	A	B	C	D
S-ILS 20	905-1/2 200 (200-1/2)			
S-LOC 20	1160-1/2 455 (500-1/2)	1160-7/8 455 (500-7/8)	1160-1 455 (500-1)	
CIRCLING	1300-1 595 (600-1)	1480-2 1/4 775 (800-2 1/4)	1480-2 1/2 775 (800-2 1/2)	

TDZL Rwy 20

REIL Rwy 20

HIRL Rwy 2-20

FAF to MAP 5.1 NM

Knots	60	90	120	150	180
Min:Sec	5:06	3:24	2:33	2:02	1:42

CONCORD, NORTH CAROLINA  
Amdt 2B 27FEB20

35°23'N-80°43'W

CONCORD-PADGETT RGNL (JQF)  
ILS or LOC RWY 20

SE-2, 03 NOV 2022 to 01 DEC 2022

SE-2, 03 NOV 2022 to 01 DEC 2022