

APP CRS	Rwy Idg	<b>6400</b>
<b>192°</b>	TDZE	<b>81</b>
	Apt Elev	<b>82</b>

# RNAV (GPS) RWY 19

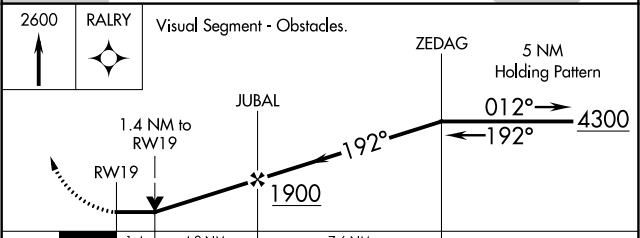
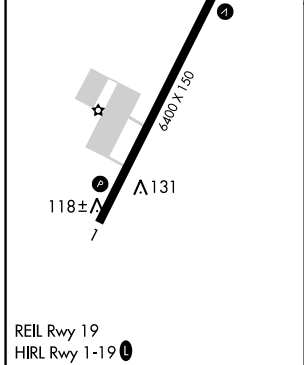
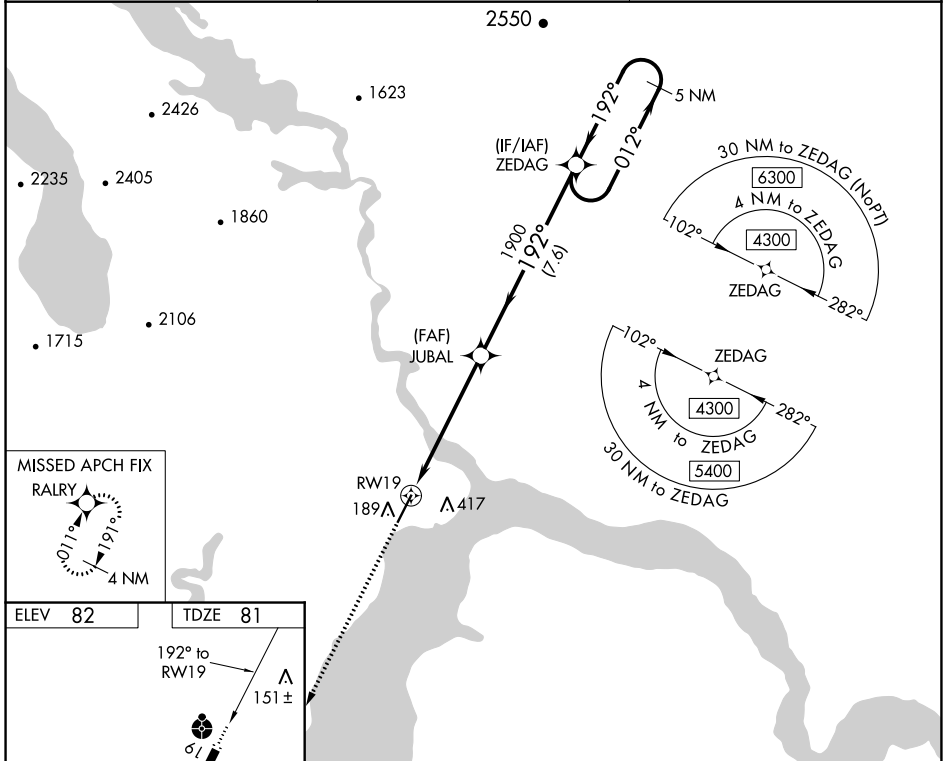
DILLINGHAM (DLG)(PADL)

**⚠** Inop table does not apply to Cats A/B. Inop table does not apply when using Manokotok altimeter setting. Circling NA east of Rwy 1-19. Rwy 19 helicopter visibility reduction below ¼ SM NA. DME/DME RNP-0.3 NA. VDP NA when using Manokotok altimeter setting. When local altimeter setting not received, use Manokotok altimeter setting and increase all MDA 40 feet and increase LNAV Cat C/D visibility ½ SM. For inop ALS, increase LNAV Cat C/D visibility to 1 ⅜ mile.



**MISSED APPROACH:**  
Climb to 2600 direct RALRY and hold.

AFIS <b>125.0</b>	ANCHORAGE CENTER <b>132.75 282.35</b>	DILLINGHAM RADIO <b>123.6 (CTAF)</b>
----------------------	--	---



CATEGORY	A	B	C	D
LNAV MDA	560-1	479 (500-1)	560-1¼	479 (500-1¼)
<b>C</b> CIRCLING	600-1	518 (600-1)	700-1¾ 618 (700-1¾)	780-2¼ 698 (700-2¼)

AK, 03 NOV 2022 to 29 DEC 2022

AK, 03 NOV 2022 to 29 DEC 2022