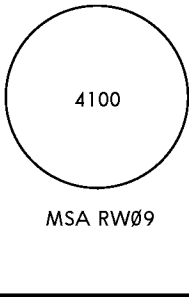


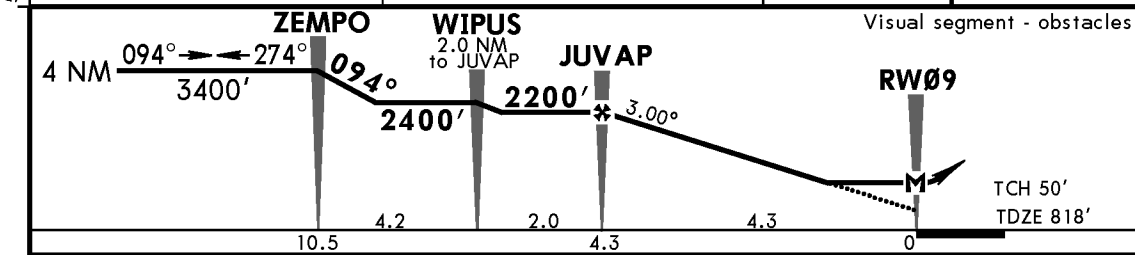
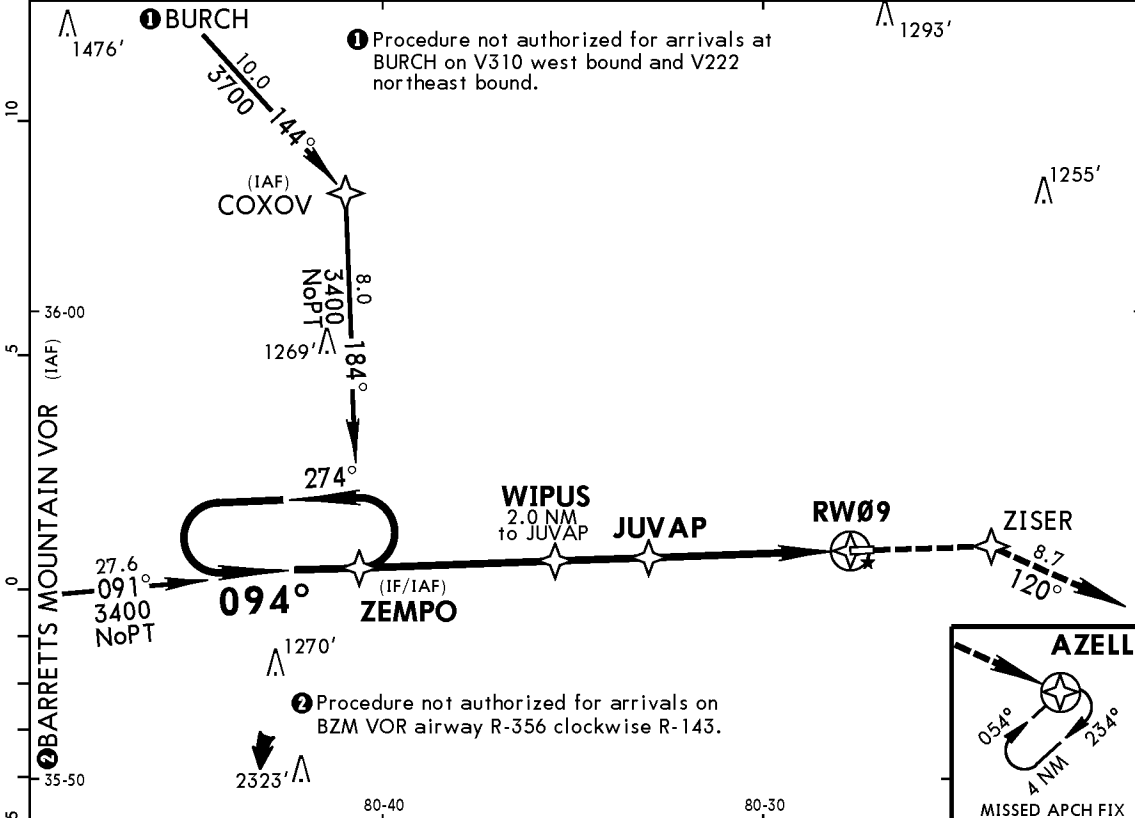
8A7
TWIN LAKES

JEPPESEN
5 OCT 18 (12-1)

MOCKSVILLE, N CAR
RNAV (GPS) Rwy 9

CAT A & B

DAVIDSON CO AWOS-3 119.82		GREENSBORO Approach (R) 124.35		TWIN LAKES UNICOM CTAF 122.7	
RNAV	Final Apch Crs 094°	Minimum Alt JUVAP 2200' (1382')	LNAV MDA(H) (CONDITIONAL) 1320' (502')	Apt Elev 818'	
MISSED APCH: Climb to 3000' direct ZISER and via 120° track to AZELL and hold.					
Alt Set: INCHES		Trans level: FL 180		Trans alt: 18000'	
RNP Apch					
1. Procedure not authorized at night. 2. Use Davidson Co altimeter setting; if not received, use Smith Reynolds altimeter setting. 3. Rwy 9 helicopter visibility reduction below 1 SM not authorized.					



Gnd speed-Kts	70	90	100	120	140	160	PAPI-L	3000'	D → ZISER
Descent Angle 3.00°	372	478	531	637	743	849			
MAP at RW09									

STRAIGHT-IN LANDING RWY 9		CIRCLE-TO-LAND	
LNAV		C	
MDA(H) 1320' (502') With Davidson Co Altimeter Setting		MDA(H) 1360' (542') With Smith Reynolds Altimeter Setting	
A	1	90	1380' (562') - 1
B	1	120	1400' (582') - 1
C	NA	C	NA
D	NA	D	NA

TERPS AMEND 1B 12 OCT 2017