



Subject : Operational evaluation of RNP AR RWY 17 at Cannes LFMD in visual meteorological conditions

With effect : From 21 April to 30 June 2020

Location: AD : Cannes LFMD – FIR : Marseille LFMM

1 - INTRODUCTION

The purpose of this evaluation is to determine the possibility to operate an RNP AR guidance for runway 17 at Cannes in order to comply with environment restrictions. The evaluation only concerns one airliner approved by “DSAC” (Civil Aviation Authorities).

2 - REGULATORY FRAMEWORK

In the absence of RNP AR approval for the concerned airliner, the regulatory framework is **that of** a visual approach clearance in class D airspace.

Flights are conducted in the following conditions :

- circular flights from Cannes to Cannes
- ATC is responsible for the separations with aircraft
- the pilot is responsible for their separation from terrain
- the RNAV guidance ensures compliance with environmental restrictions.

3 - EVALUATION CONDITIONS

Only the carrier approved by “DSAC” (Civil Aviation authorities) can take part in the evaluation.

Required meteorological conditions at Cannes :

- Visibility: 10 km MNM
- No Clouds except FEW below 5000 FT AMSL

Procedure in evaluation under radar surveillance and vectoring.

RNAV function *RF Legs* required.

4 - METHODOLOGY

Considering the required meteorological conditions, ATC will assume, except otherwise notified by the pilot, that visual approach conditions are met at all times.

The flight is vectored towards the IAF (full procedure) or another waypoint on the procedure, then cleared for visual approach.

Pilots are required to follow the prescribed route, or inform ATC.

5 - PHRASEOLOGY

ATC: Citron Air 3245, direct MD602, report established RNP AR 17

Pilot : Approach, Citron Air 3245, established

ATC : Citron Air 3245, cleared visual approach runway 17 following RNP AR track

6 – PROCEDURE WAYPOINTS, “RNP AR 17” CHART AND CODING PROPOSITION

See APPENDIXES 1, 2a, 2b, 3

ANNEXE / APPENDIX 1

PROCEDURE WAYPOINTS / MAIN FIXES

Identification	Coordonnées	
IMD17	43°30'32.4"N	006°52'13.8"E
MD600	43°36'37.1"N	006°54'18.3"E
MD610	43°32'49.4"N	007°01'13.2"E
MD605	43°32'26.4"N	006°57'07.7"E
FMD17	43°37'43.6"N	006°52'54.8"E
MD603	43°36'37.3"N	006°52'14.5"E
MD410	43°27'55.6"N	007°03'40.3"E
MD606	43°30'21.6"N	006°58'52.0"E
MD604	43°36'48.7"N	006°56'21.2"E
MD608	43°19'34.5"N	006°33'19.6"E
MD601	43°19'29.0"N	006°42'21.6"E
MD602	43°22'51.8"N	006°49'53.0"E
RW17	43°33'12.05"N	006°56'59.64"E
NEKIP	see AIP ENR 4.3	
INLOV	see AIP ENR 4.3	
MD405	see AIP "AD 2 LFMD DATA 01"	
MD412	see AIP "AD 2 LFMD DATA 01"	
MD503	see AIP "AD 2 LFMD DATA 01"	
MD504	see AIP "AD 2 LFMD DATA 01"	

APPROCHE AUX INSTRUMENTS

Instrument approach
CAT A B C

Procédure réservée aux exploitants munis d'une approbation spécifique.
Procedure reserved for operators holding a specific approval.

CANNES MANDELIEU

INA RNP RWY 17 (AR)

ATIS : CANNES : 130.480

APP : NICE Approche / Approach : 134.475 (H) (1) - 124.180 (H) (2) -
120.655 (I) - 125.580 (s)

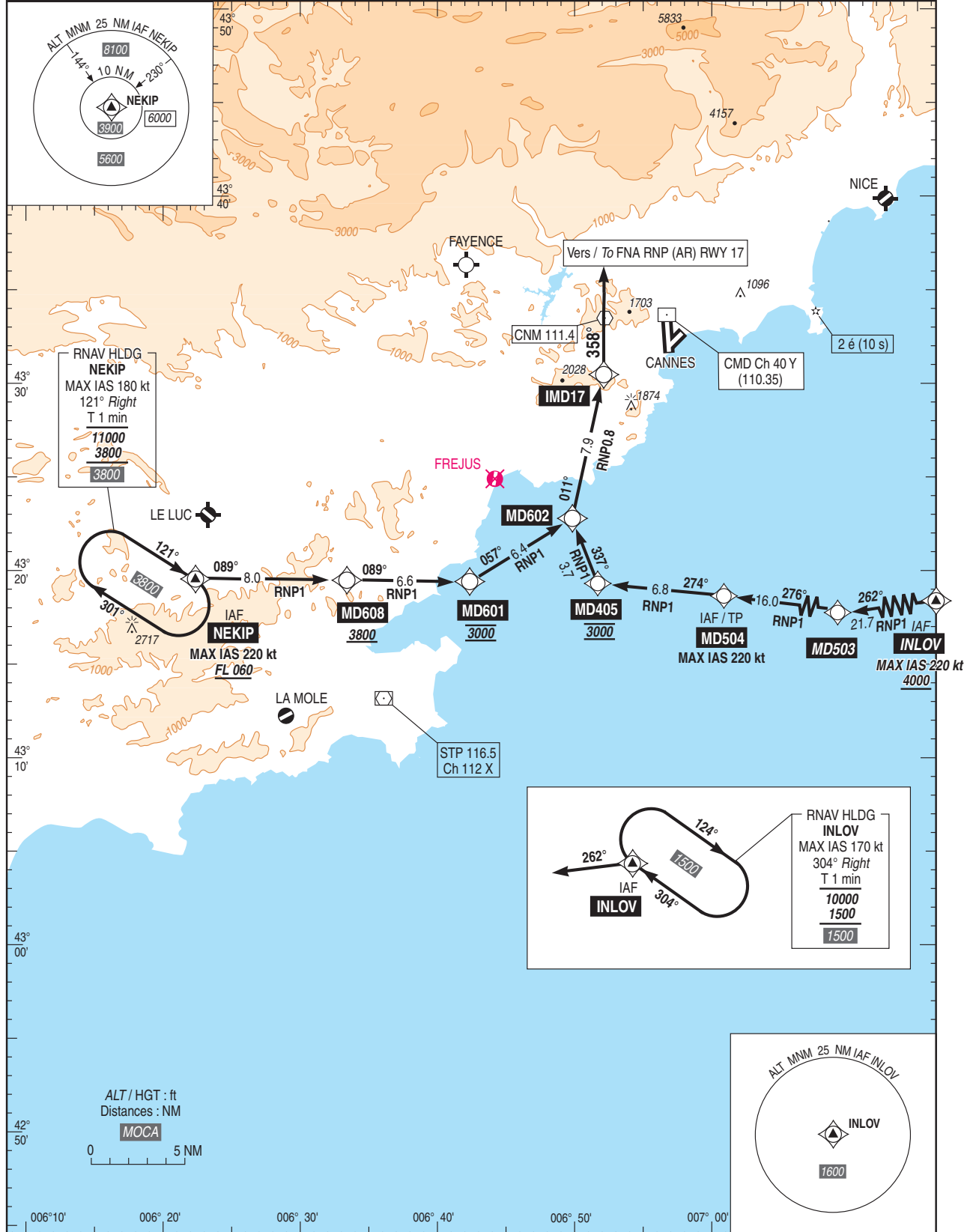
(1) Secteur Ouest / West Sector
(2) Secteur Est / East Sector

RNP AR APCH
RF et/and GNSS requis/required

RDH : 49

VAR
2°E
(15)

TWR : CANNES Tour / Tower : 118.625



AIP SUP
FRANCE

ANNEXE / APPENDIX 2b

AD 2 LFMD IAC RWY17 FNA RNP (AR)

APPROCHE AUX INSTRUMENTS

CANNES MANDELIEU

Instrument approach

Procédure réservée aux exploitants munis d'une approbation spécifique.
Procedure reserved for operators holding a specific approval.

CAT B C

FNA RNP RWY 17 (AR)

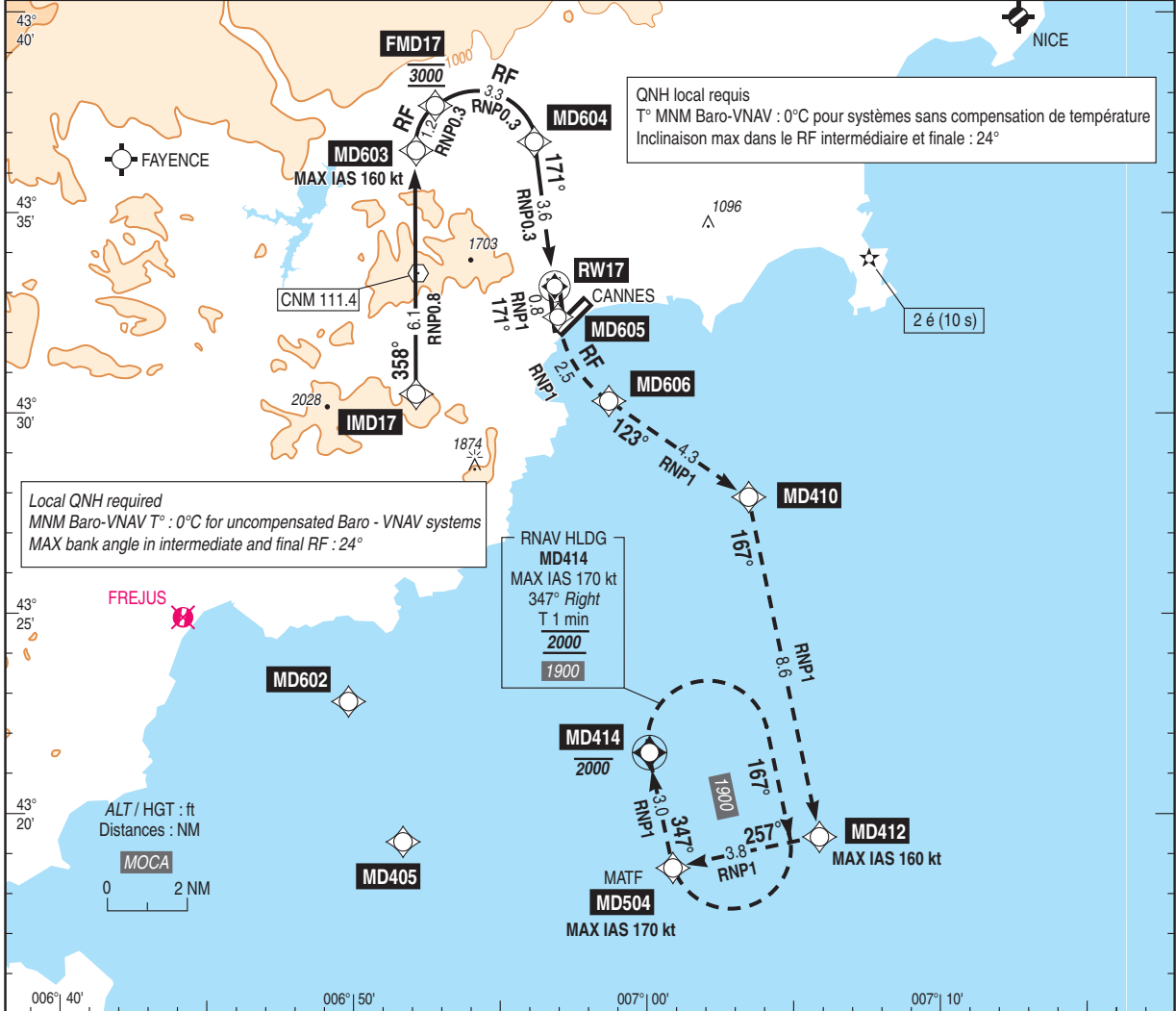
ALT AD : 14, DTHR : 13 (1 hPa)

ATIS CANNES : 130.480

APP : NICE Approche / Approach : 134.475 (H) (1) - 124.180 (H) (2) -
120.655 (I) - 125.580 (S) (1) Secteur Ouest / West Sector (2) Secteur Est / East Sector

RNP AR APCH RF et/and GNSS requis/required	RDH : 49	VAR 2°E (15)
--	----------	--------------------

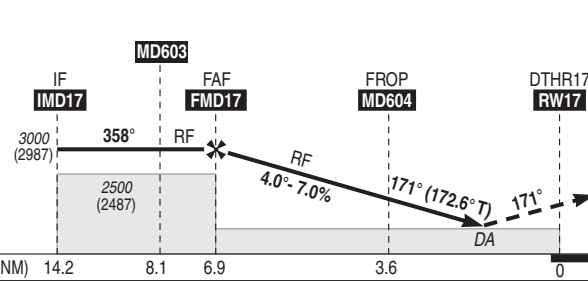
TWR : CANNES Tour / Tower : 118.625



Local QNH required
MNM Baro-VNAV T°: 0°C for uncompensated Baro - VNAV systems
MAX bank angle in intermediate and final RF : 24°

RNAV HLDG
MD414
MAX IAS 170 kt
347° Right
T 1 min
2000
1900

TA : 5000



API : Monter vers MD605 puis tourner RF gauche vers MD606, puis poursuivre vers MD410 puis vers MD412 (MAX IAS 160 kt) puis vers MD504 (MAX IAS 170 kt), puis intégrer l'attente MD414 en montée vers 2000 (1987), ou suivre instructions du CTL.

Missed APCH : Climb to MD605 then RF turn left to MD606, then proceed to MD410, then to MD412 (MAX IAS 160 kt), then to MD504 (MAX IAS 170 kt) and join holding pattern MD414 climbing up to 2000 (1987), or proceed according to ATC instructions.

MNM AD : distances verticales en pieds, RVR et VIS en mètres / vertical distances in feet, RVR and VIS in metres. REF HGT : ALT DTHR

CAT	RNP 0.3			RW17 NM ALT (HGT)	6 2610 (2597)	5 2190 (2177)	4 1760 (1747)	FROP 3.6 1610 (1597)
	DA (H)	VIS	OCH					
B	900 (890)	4000	881					
C	910 (900)	4000	896					

Observations / Remarks : Panne de guidage GNSS lors de l'approche / Loss of GNSS guidance during approach : voir / see AIP ENR 1.5.



© SIA

ANNEXE / APPENDIX 3

RMK	RNP RWY17 (AR)										REF NAVAID :				
	RF et/and GNSS requis/required	Path Terminator	Waypoint Identification	Fly Over	Direction MAG (°)	Direction True (°)	Distance (NM)	Turn direction	MNM Altitude (FL or AMSL ft)	MAX Altitude (FL or AMSL ft)	MAX IAS (kt)	Vertical angle (°) / TCH (m)	NAV Spec	Radius Val (NM)	Arc CTR ID
HLDG	-		INLOV	-	-	-	-	-	-	-	-	-	-	-	-
HLDG	-		NEKIP	-	-	-	-	-	-	-	-	-	-	-	-
HLDG	-		MD414	-	-	-	-	-	-	-	-	-	-	-	-
INA INLOV	IF		INLOV	-	-	-	-	-	4000	-	220	-	-	-	-
	TF		MD503	-	262	264.0	21.7	-	-	-	-	-	RNP1	-	-
	TF		MD504	-	276	277.8	16.0	-	-	-	-	-	RNP1	-	-
	TF		MD405	-	274	275.6	6.8	-	3000	-	-	-	RNP1	-	-
	TF		MD602	-	337	338.7	3.7	-	-	-	-	-	RNP1	-	-
	TF		IMDI7	-	011	012.5	7.9	-	-	-	-	-	RNP0.8	-	-
INA MD504	IF		MD504	-	-	-	-	-	-	-	220	-	-	-	-
	TF		MD405	-	274	275.6	6.8	-	3000	-	-	-	RNP1	-	-
	TF		MD602	-	337	338.7	3.7	-	-	-	-	-	RNP1	-	-
	TF		IMDI7	-	011	012.5	7.9	-	-	-	-	-	RNP0.8	-	-
	IF		NEKIP	-	-	-	-	-	FL60	-	220	-	-	-	-
	TF		MD608	-	089	090.6	8.0	-	3800	-	-	-	RNP1	-	-
INA NEKIP	TF		MD601	-	089	090.7	6.6	-	3000	-	-	-	RNP1	-	-
	TF		MD602	-	057	058.4	6.4	-	-	-	-	-	RNP1	-	-
	TF		IMDI7	-	011	012.5	7.9	-	-	-	-	-	RNP0.8	-	-
	IF		IMDI7	-	-	-	-	-	-	-	-	-	-	-	-
	TF		MD603	-	358	000.1	6.1	-	-	-	160	-	RNP0.8	-	-
	RF		FMD17	-	-	-	1.2	R	3000	-	-	-	RNP0.3	1.5	MD600
APCH	RF		MD604	-	-	-	3.3	R	-	-	-	-4.0/15	RNP0.3	1.5	MD600
	TF		RW17	Yes	171	172.6	3.6	-	-	-	-	-4.0/15	RNP0.3	-	-
	TF		MD605	-	171	172.7	0.8	-	-	-	-	-	RNP1	-	-
	RF		MD606	-	-	-	2.5	L	-	-	-	-	RNP1	3.0	MD610
	TF		MD410	-	123	124.8	4.3	-	-	-	-	-	RNP1	-	-
	TF		MD412	-	167	168.4	8.6	-	-	-	160	-	RNP1	-	-
TF		MD504	-	257	258.5	3.8	-	-	-	170	-	-	RNP1	-	-
	TF		MD414	Yes	347	348.4	3.0	-	-	2000	-	-	RNP1	-	-